



# 1315 N. North Branch

GOOSE ISLAND, CHICAGO

Horizontal Creative Office

Asset Designed for Modern Tenant Conveniences

# AMENITIES

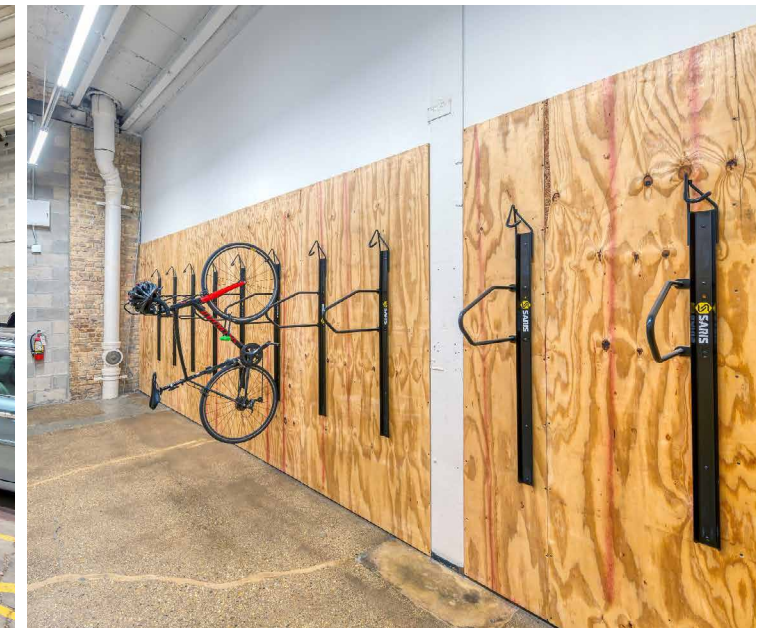
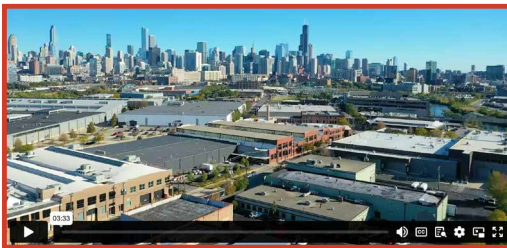
## Distinctive, Boutique Asset with Market-Leading Parking and a Full Suite of Amenities

The building features unique, modern design and construction, as well as market-leading tenant amenities including private outdoor patios/decks with premier views of the downtown Chicago skyline.

### Fully Amenityzed

- Best-In-Class Fitness Center
- State of the Art Golf Simulator Lounge
- Shower/Lockers
- Bike Room
- Indoor Heated Parking Garage
- Private Outdoor Patios/Decks

### Explore 1315 N. North Branch



# AVAILABILITY

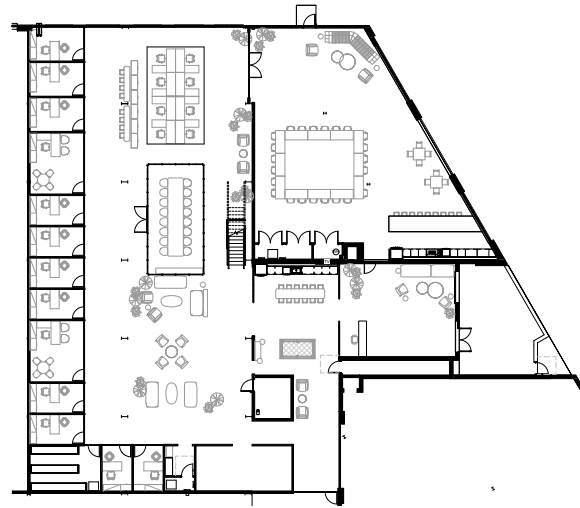
## 16,192 RSF

- Multi-level space with high ceilings
- Bright, natural lighting throughout
- Stunning views of downtown Chicago
- Open, modern kitchen area
- 3 collaborative meeting spaces
- Large, multi-use meeting space
- 15 private offices
- Private Outdoor Entry/Terrace

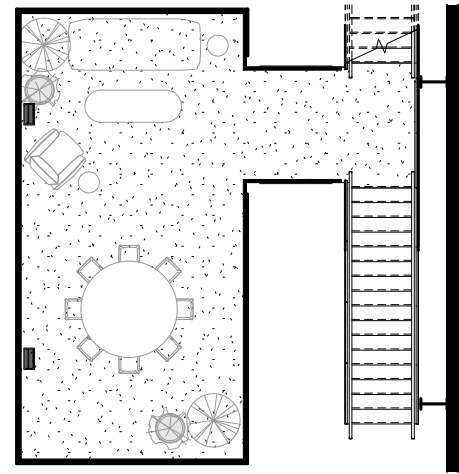
### Tour Suite F at 1315 N. North Branch



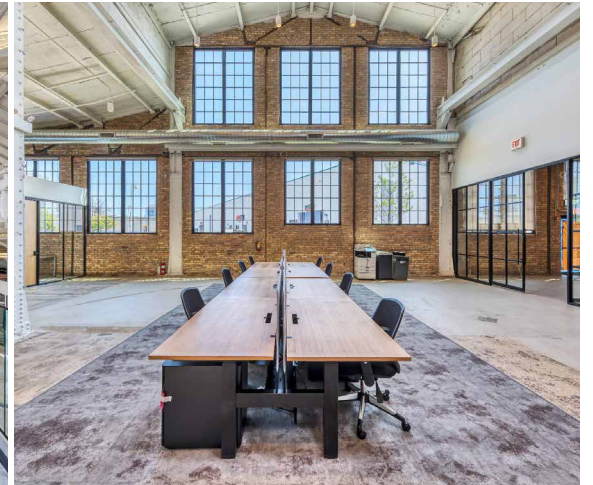
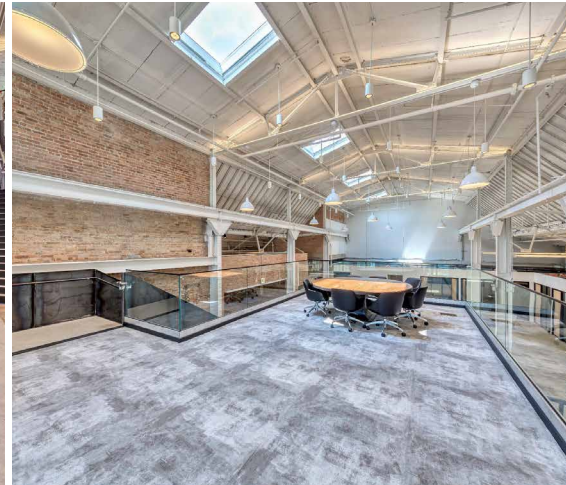
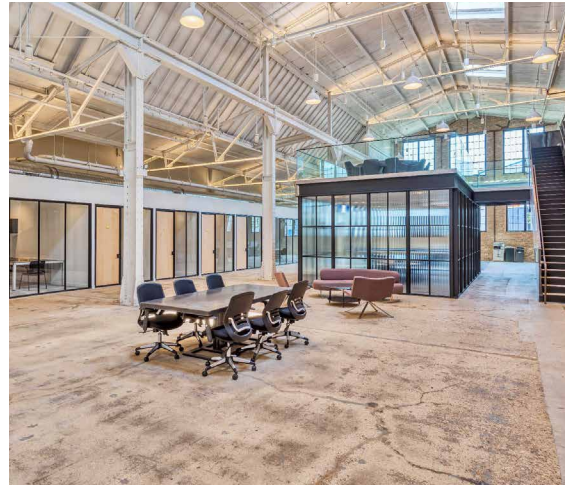
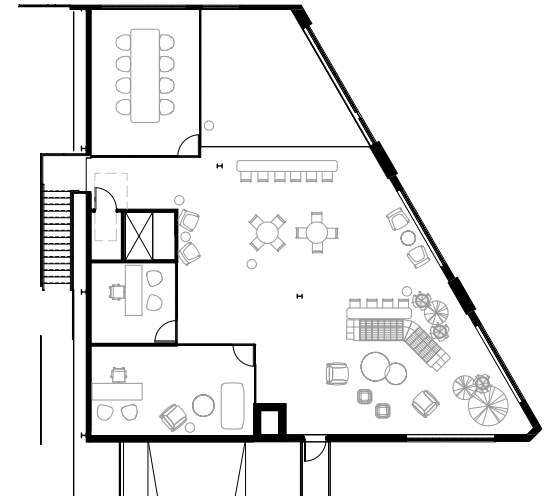
Ground Floor



Mezzanine



2nd Floor

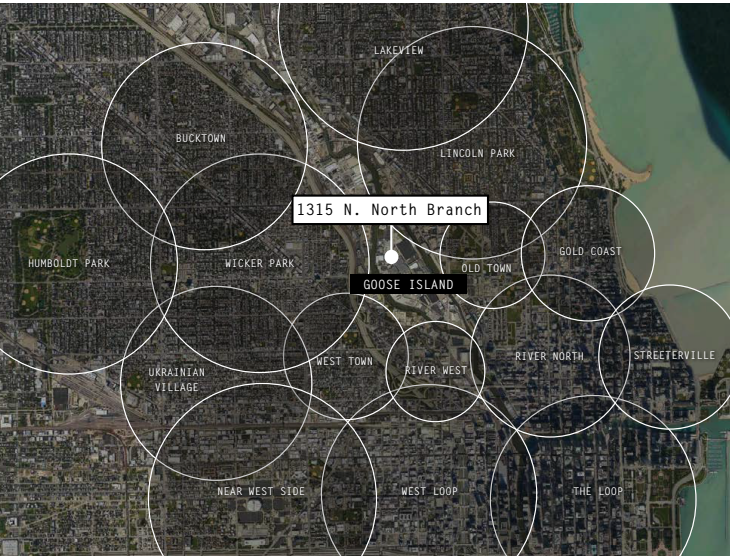


# LOCATION

## Centralized Location Provides Convenient Access to All of Chicago's North Side Neighborhoods and Popular Spots

Situated on Goose Island, 1315 N. North Branch is perfectly situated to allow for easy access to various retailers.

Neighboring West Town, Lincoln Park and Wicker Park, this prime location offers the perfect balance of urban energy, green spaces and trendy neighborhoods.

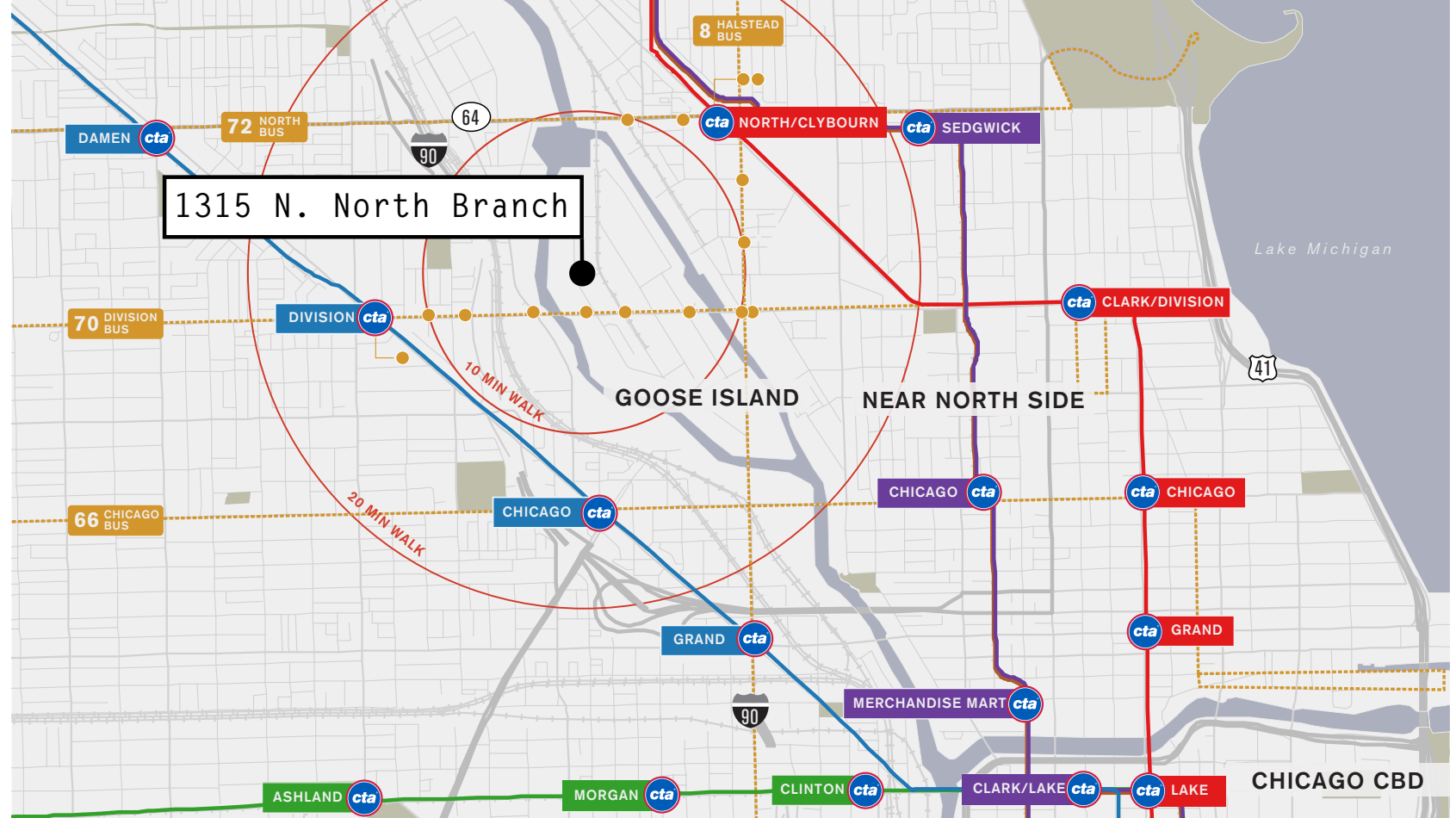


# TRANSPORTATION & ACCESS

**1315 N. North Branch provides excellent accessibility to all forms of transportation which allows for an easy commute, however you travel.**

Public transportation to 1315 N. North Branch provides easy access to some of Chicago's most popular neighborhoods.

The building's unique urban location, approximately 3 miles north of Chicago's Central Business District, draws tenants from both urban and suburban residential neighborhoods.



**LESS THAN 1/2 MILE**  
FROM THE KENNEDY EXPRESSWAY

**14 CTA BUS STOPS**  
WITHIN A HALF-MILE OF THE PROPERTY

**3/4 OF A MILE**  
WEST OF DIVISION

**3 MILES NORTH**  
OF CHICAGO'S CBD

# 1315 N. North Branch

GOOSE ISLAND, CHICAGO



## LEASING INFORMATION

Sadie Boscolo  
Director  
312-419-4706

Brian Atkinson  
Managing Director  
312-419-4930