



Standalone Cold Storage

For Lease | 2130 Old Georgia Hwy | Gaffney, SC

*59,214 SF Facility Available
Availability for building expansion!*

Contact Us:

Turner Wisheart

OnPace Cold
+1 770 654 4334
turner.wisheart@onpacepartners.com

Chris Cummings

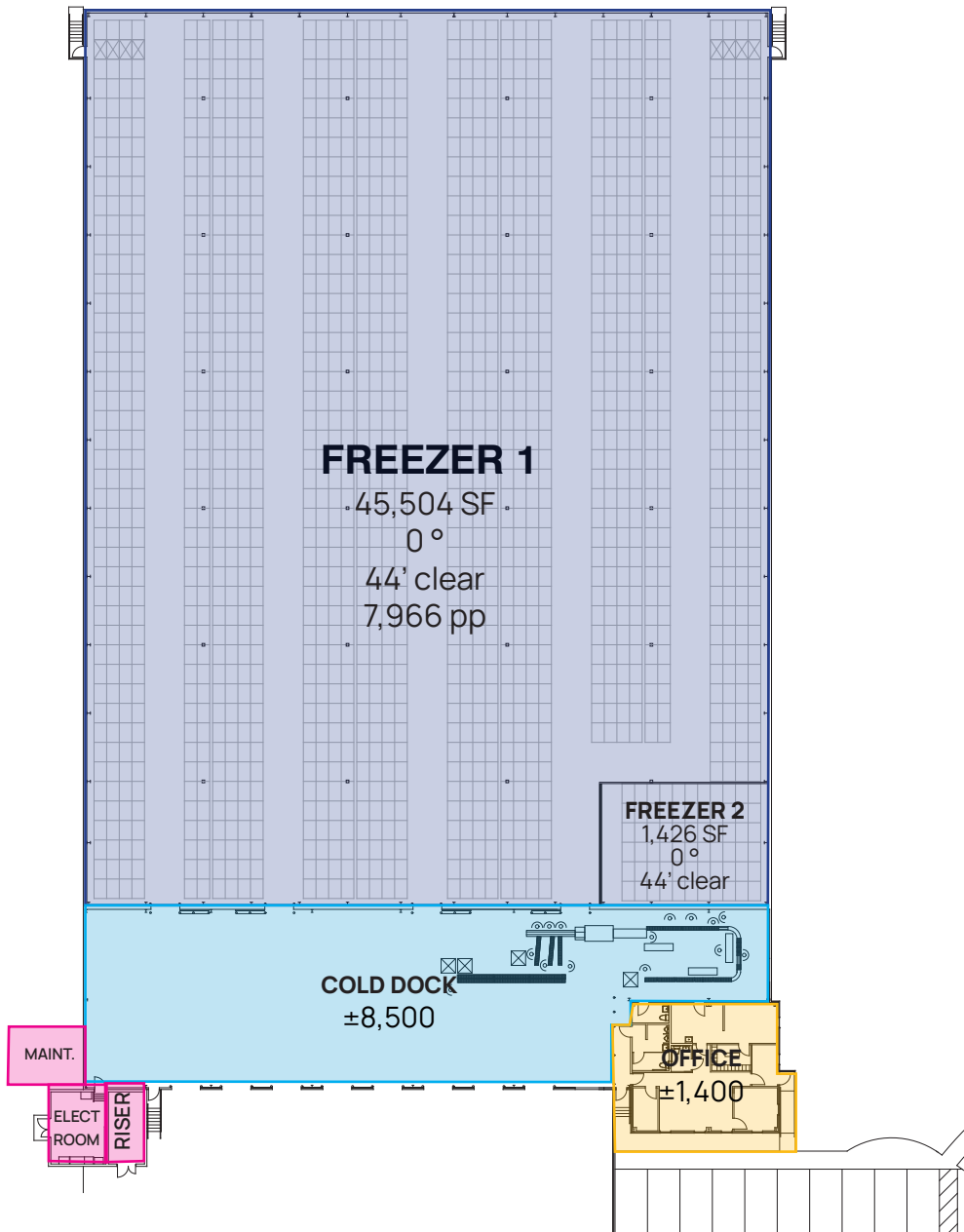
OnPace Cold
+1 678 612 9958
chris.cummings@onpacepartners.com

Stephen Bridges

OnPace Cold
+1 404 909 1560
stephen@onpacepartners.com

2130 Old Georgia Hwy I Gaffney, SC

Standalone Cold Storage



COLD STORAGE BUILDING SPECIFICATIONS:

Total Land:	52.21 acres
Available SF:	59,214
Freezer SF:	46,930
Cold Dock SF:	±8,500
Office SF:	±1,400
Pallets:	7,966
Refrigeration System:	Freon (R-404A)
Sprinkler System	In-rack sprinklers
Ceiling Heights:	44'
Dock Door(s):	9
Drive In Door(s):	1
Year Built:	1995
Parking:	62+ auto; separate lot can be for trailer parking

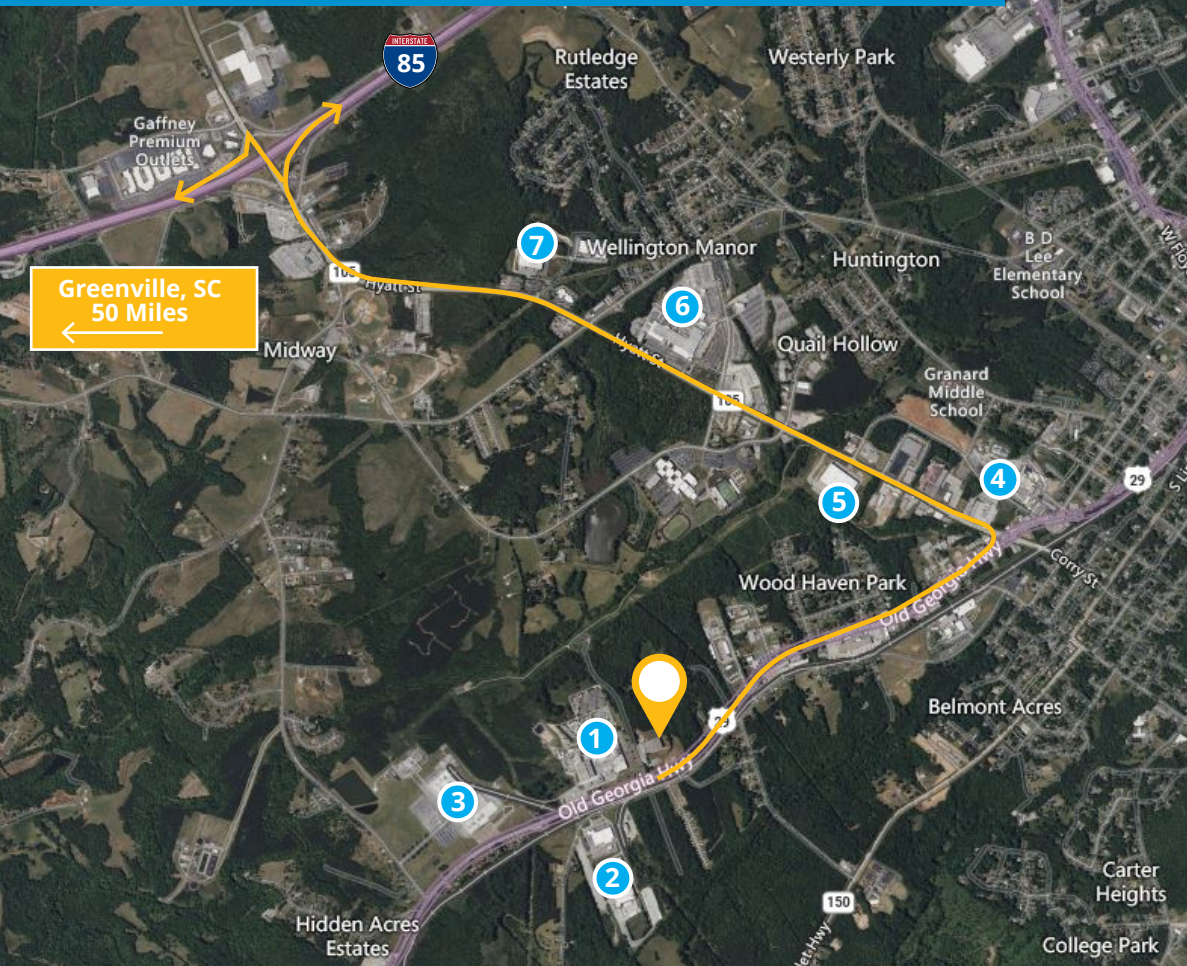
Ability for significant building expansion, parking or outside storage!

2130 Old Georgia Hwy I Gaffney, SC
Building Photos



2130 Old Georgia Hwy | Gaffney, SC

Neighboring Tenants Map



In addition to its neighboring tenants, 2130 Old Georgia Highway is situated within a highly concentrated food production corridor. Nearby manufacturers include:

- Tyson Foods
- Perdue Farms
- Dole Food Company
- Frito-Lay
- House of Raeford
- Wayne-Sanderson Farms
- Mountaire Farms

NEIGHBORING TENANTS

- | | |
|----|---------------------|
| #1 | Nestle Frozen Foods |
| #2 | Nestle/DHL |
| #3 | Wrestore Technology |
| #4 | Brown Packing |
| #5 | Daimler Truck |
| #6 | Freightliner |
| #7 | Champion Foods |



Subject Property is located 2.2 mi from I-85

Contact Us:

Turner Wisehart

OnPace Cold
+1 770 654 4334
turner.wisehart@onpacepartners.com

Chris Cummings

OnPace Cold
+1 678 612 9958
chris.cummings@onpacepartners.com

Stephen Bridges

OnPace Cold
+1 404 909 1560
stephen@onpacepartners.com

